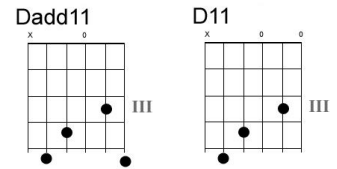


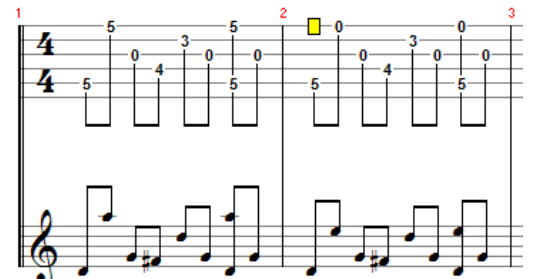
A Most Peculiar Man

by Paul Simon (1965)

Dadd11 D11 Dadd11 D11
 He was a most peculiar man.
Em Em Em
 That's what Mrs. Reardon says, and she should know,
A D D
 She lived upstairs from him.
G A7 Dadd11 D11 Dadd11 D11
 She said he was a most peculiar man.



Dadd11 D11 Dadd11 D11
 He was a most peculiar man. He
Em Em Em Em
 lived all alone, within a house, within a room,
A D G A Dadd11 D11 Dadd11 D11
 within himself; A most peculiar man.



Dadd11 D11 Dadd11 D11
 He had no friends, he seldom spoke. And
Em Em
 no one in turn ever spoke to him, 'cause he
Em Em A7 D
 wasn't friendly and he didn't care, and he wasn't like them,
G A7 Dadd11 D11 Dadd11 D11
 Oh no, he was a most peculiar man.

Dadd11 D11 Dadd11 D11
 He died last Satur day. He
Em Em
 turned on the gas and he went to sleep, with the
Em Em Em Em
 windows closed so he'd never wake up to his silent world and his tiny room; and
Em Em A A7 D D
 Mrs. Reardon says he has a brother somewhere, who should be notified soon. And
G(♯) A7(♯) D(♯) Bm(♯)
 all the people said what a shame that he is dead, but
G A Dadd11 D11 Dadd11 D11
 wasn't he a most peculiar man?